

Amtrak Performance Tracking (APT)

Amtrak Performance Tracking (APT)

System Overview

April 20, 2010



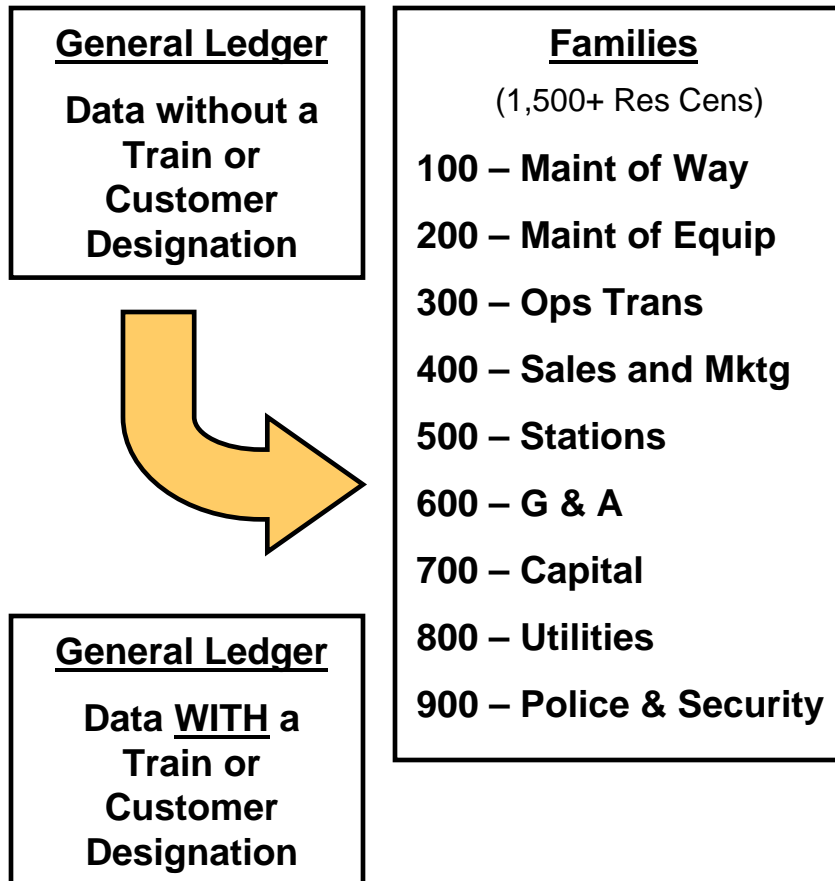
Why replace the Route Profitability System (RPS)?

- **The mainframe system is past the end of its life cycle and is difficult to maintain**
- **Analyzing results is difficult without extensive knowledge of and access to the system**
- **Long and manually intensive process to run the system – results are not timely, typically available three weeks after close of the General Ledger**
- **The Secretary of Transportation was authorized by Congress (Consolidated Appropriations Act of 2005) to develop a methodology to determine the avoidable and fully allocated cost of each Amtrak Route – assigned the task to the Volpe National Transportation Systems Center (Volpe)**

Amtrak Performance Tracking - System

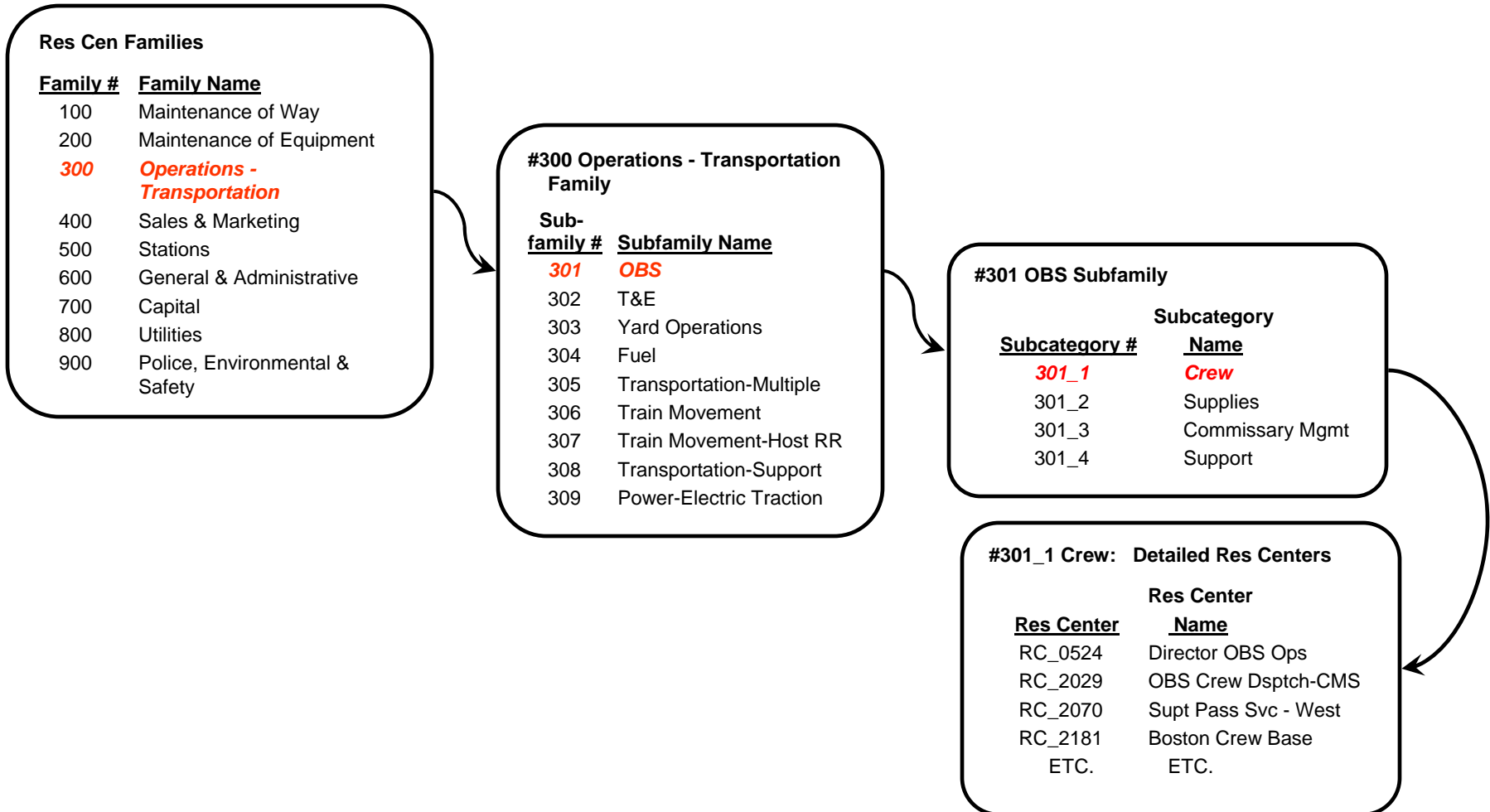
- **Runs on a SQL server**
- **Utilizes SAP BPC (Fingate) as the software platform**
- **Unlike RPS which primarily uses Functions, the first allocation criteria in APT are Responsibility Centers (Res Cens), then account/function combinations**
 - Should eliminate many “miscoded” allocation problems
- **Analyzing results is transparent and easily reconciles back to the source General Ledger data**
- **Automated system has limited manual processes – data much more timely, estimated production time of a week or less**
 - Manual processes still exist to clear data errors

Amtrak Performance Tracking – Process Overview

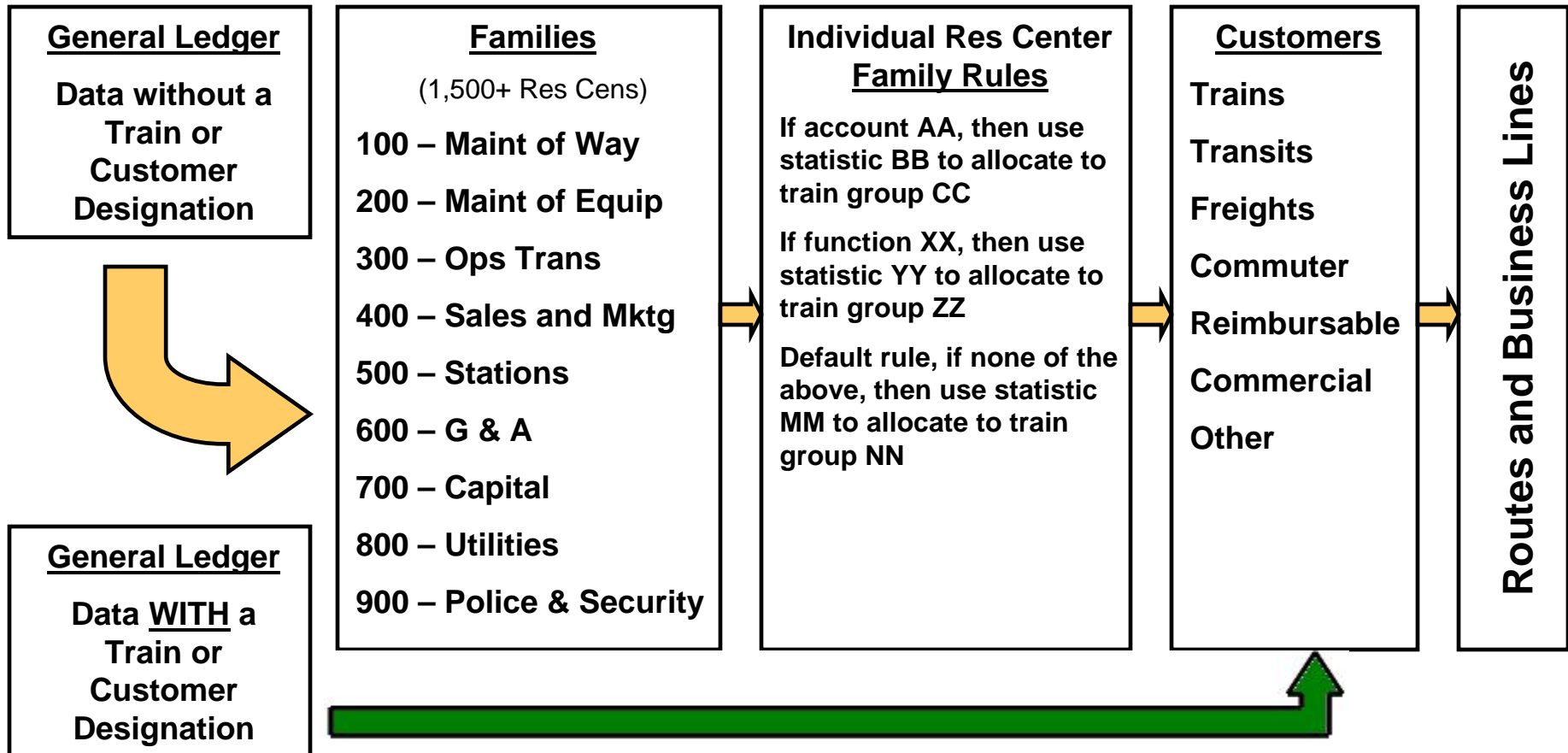


- **General Ledger Data**
 - Does not have a train or customer designation (the majority of records)
 - Has a train or customer designation
- **If G/L record does not have a train or customer designation – then it is first aggregated by Family**
 - What is a Family? A Family is a group of Res Centers that perform a similar function

APT Family (Res Center) Hierarchy Example



Amtrak Performance Tracking – Process Overview (continued)



A General Comparison of RPS vs. APT Output

PROCESS	RPS	APT
Report Data by Lines	✓	✓
Report Data by Detailed Res Center	✓	✓
Report Data by Detailed Account		✓
Report Data by Detailed Function		✓
Allocates costs to all Customers		✓
Sort data by Statistic		✓
Sort data by Directly Assigned vs. Allocated		✓
View Allocation Rules		✓